

Violino II **Matinas de Santo Antônio**

Edição: Carlos Alberto Figueiredo  
Fonte: ORB

Jerônimo de Sousa  
(fl.1721-1826)

**Invitatório**

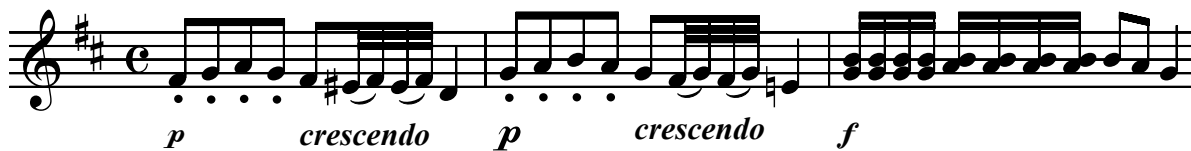
**Andante**



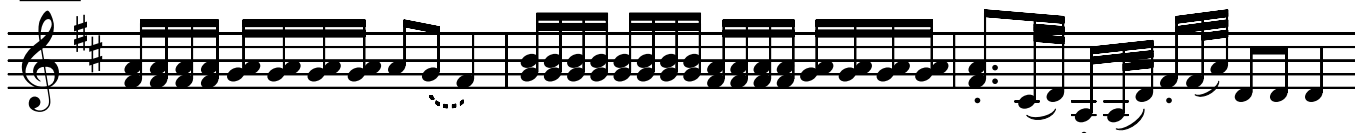
## Violino II

## Responsório I

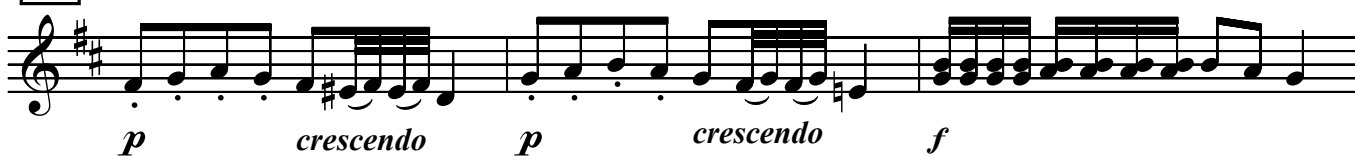
Andante



4



7



10



13



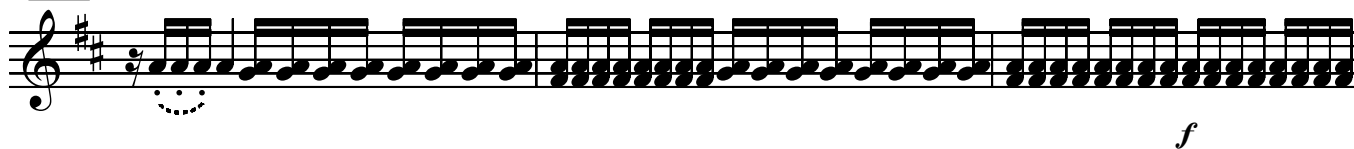
16



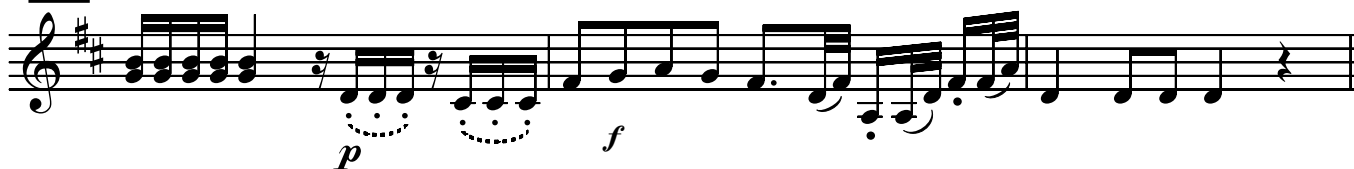
19



22



25



28

**Allegro**



35



42



49



56



63



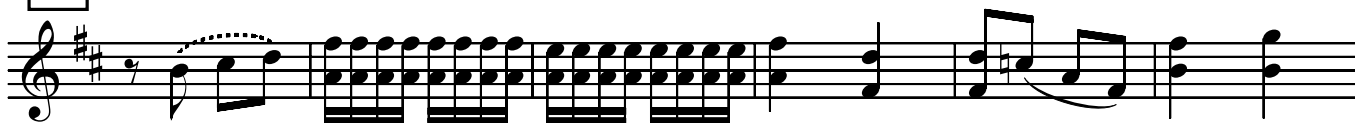
69



76



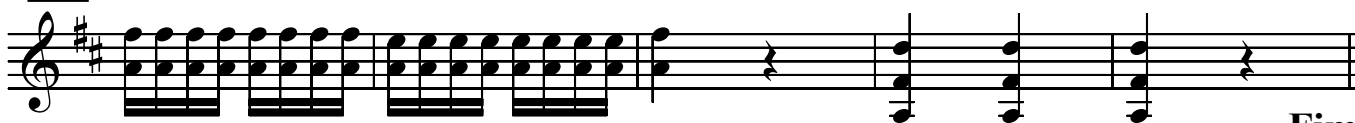
83



89



94



Fim

99

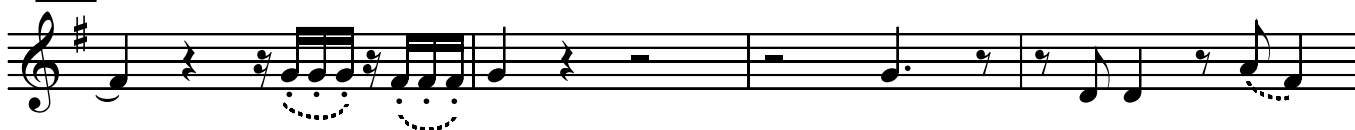
Moderato

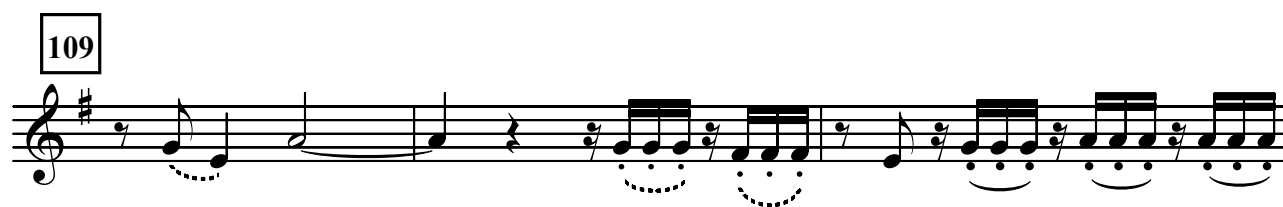


102



105





**D. C. Allegro ao Fim**

## Violino II

## Responsório II

## Andante

The first staff of music is written in treble clef with a key signature of one sharp (F#). The melody begins with a quarter note on G4, followed by an eighth note on A4, another eighth note on G4, and a quarter note on F#4. This is followed by a quarter rest, then a quarter note on E4, an eighth note on D4, another eighth note on E4, and a quarter note on D4. After another quarter rest, there is a quarter note on C4, an eighth note on B3, another eighth note on C4, and a quarter note on B3. The staff concludes with a quarter note on A3, an eighth note on G3, another eighth note on A3, and a quarter note on G3. A dotted line connects the eighth notes on G3 and A3 in the final measure.

4

7

10

[illegible]

13

16

19

[illegible]

22

25

28

31

34 Allegro

38

43

47

51





85

*ff*

89

*p* *f* Fim

95 Verso  
Andantino

99

103

*p*

106

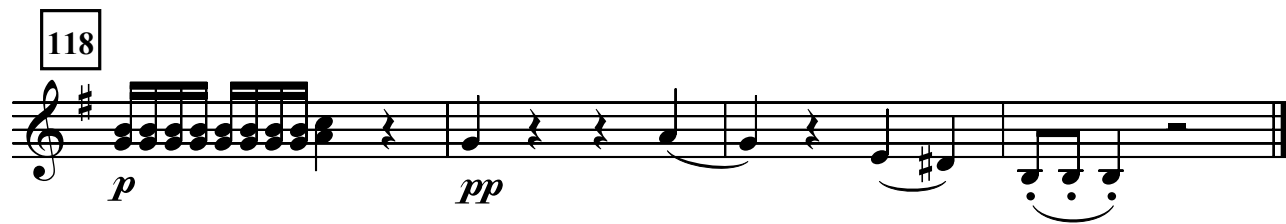
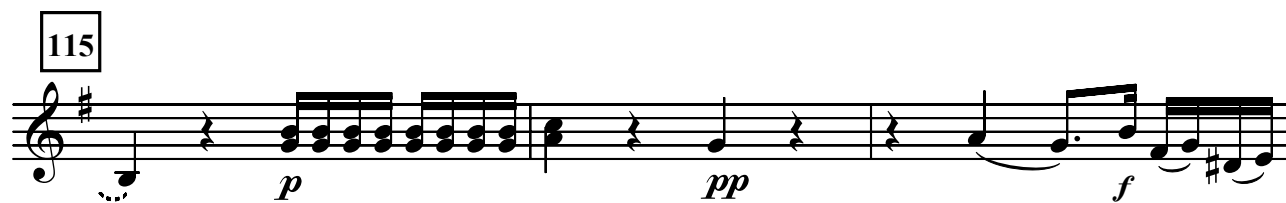
*crescendo*

109

*p*

112

*crescendo*



**D. C. Allegro ao Fim**

## Violino II

## Responsório III

Moderato



3



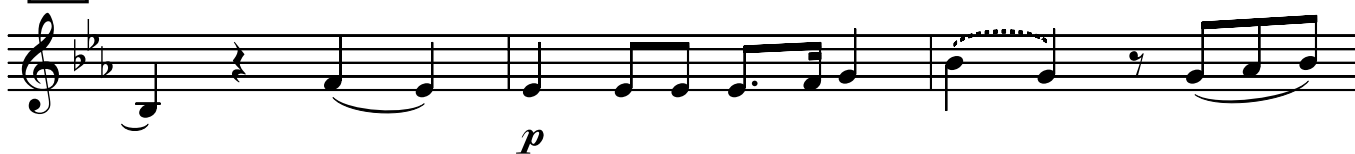
5



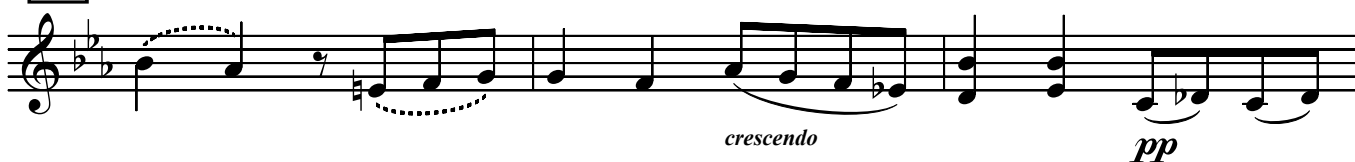
8



11



14



17



20

*crescendo pp* *crescendo f*

23

25 **Allegro**

31

38

44

51

*p* *f* *p*

57

*f*

63



69



75



80



85



Fim

91

Verso  
Andantino

94



98

*p* *crescendo*

101

*crescendo* *pp*

**D. C. Allegro, depois Gloria Patri**

105 **Largo**

107

109

*crescendo* *pp*

**D. C. Allegro ao Fim**



22

*p* *f*

25

*p*

28

*f*

31

*f*

34 **Allegro**

*p* *f* *p*

37

*f*

40

*f*

43

*p* *f*



46

*p* *f*

49

52

55

59

*p* *f* *p*

63

66

68

Fim

**Verso**  
**Andantino**

72



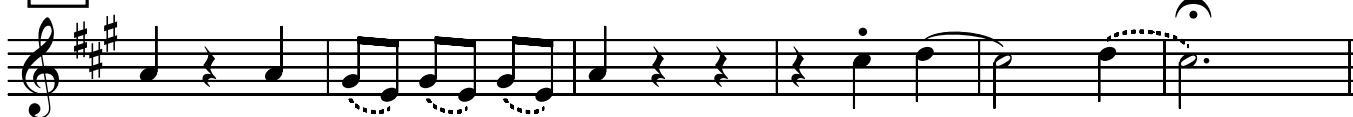
43



49



55



61

**Allegro**



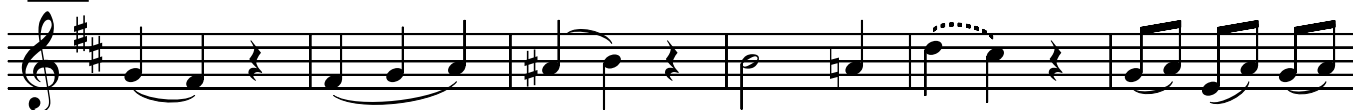
67



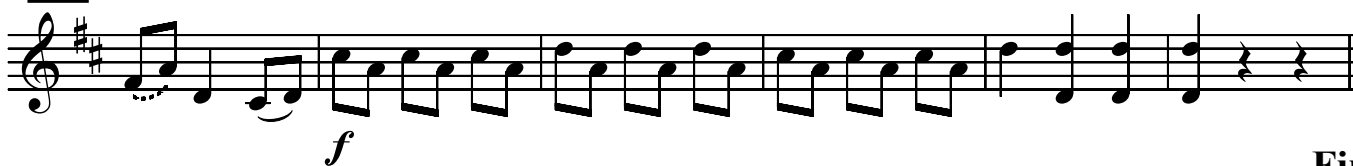
73



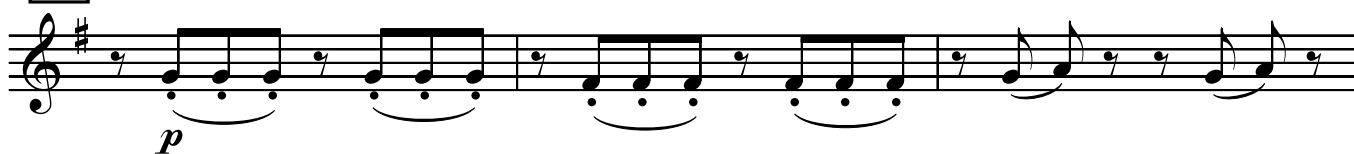
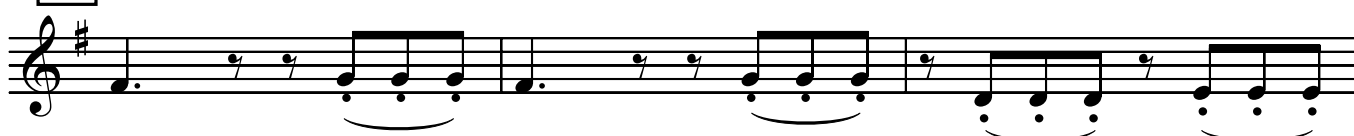
79



85



**Fim**

**91 Verso  
Moderato****94****97****100****103****106****D. C. Allegro ao Fim**

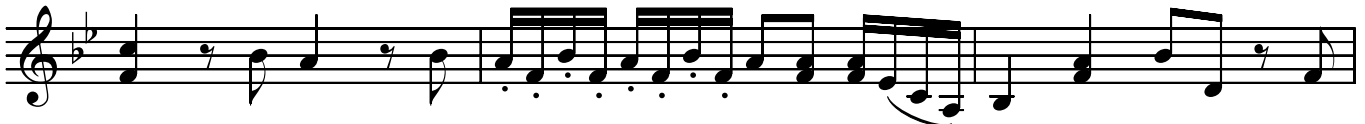
## Violino II

## Responsório VI

Moderato



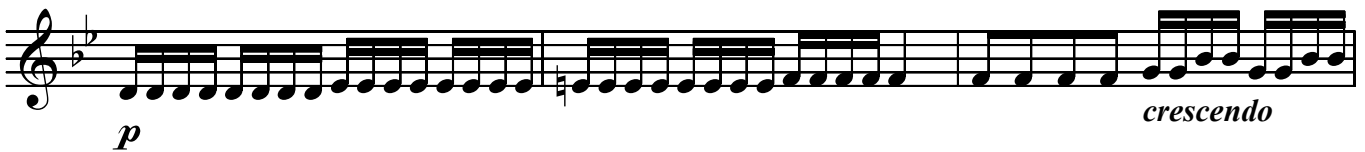
4



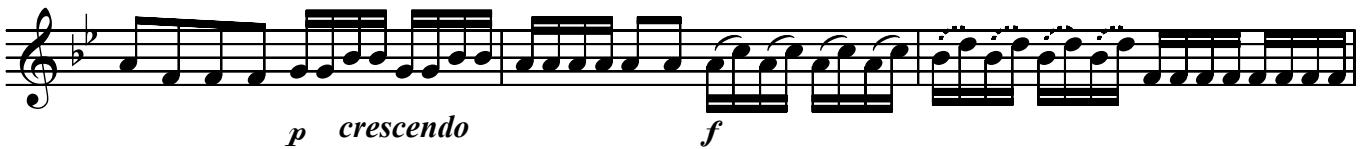
7



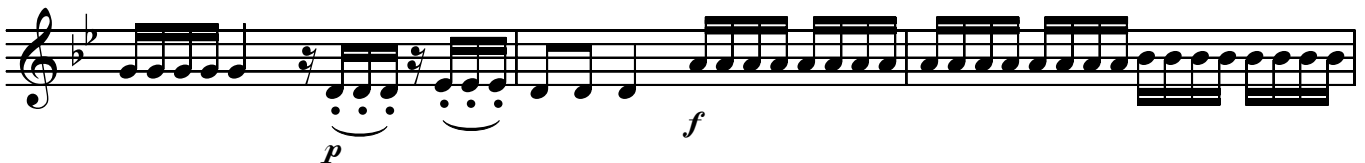
10



13

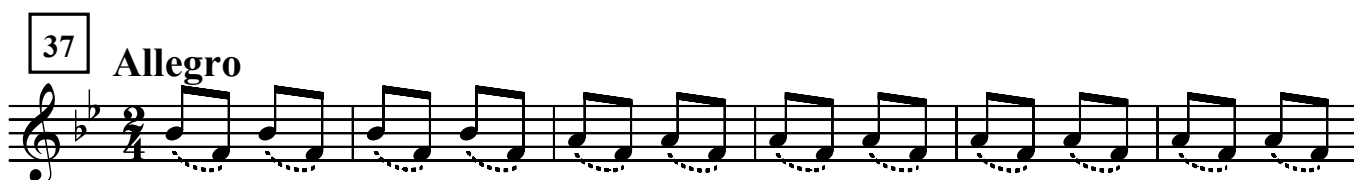
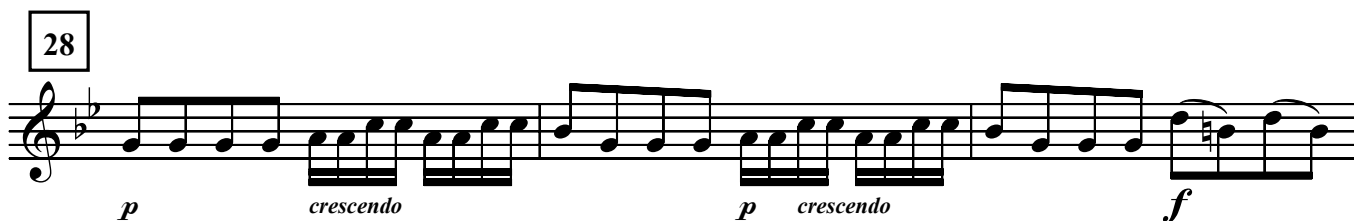
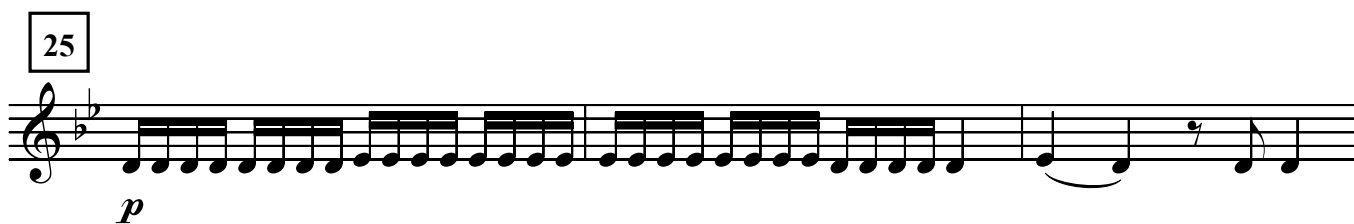


16



19

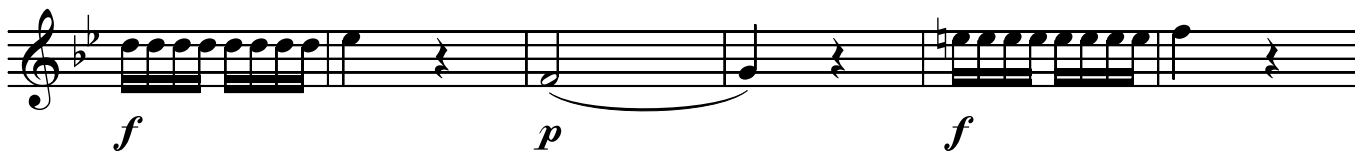




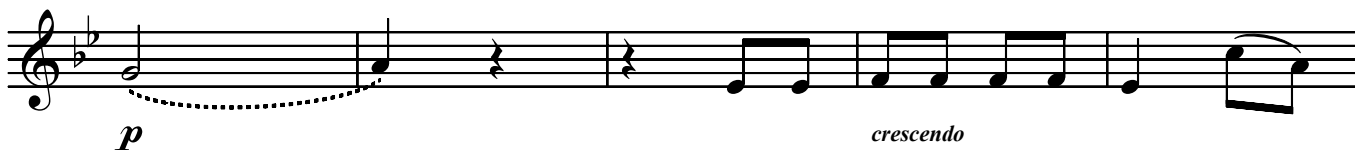
56



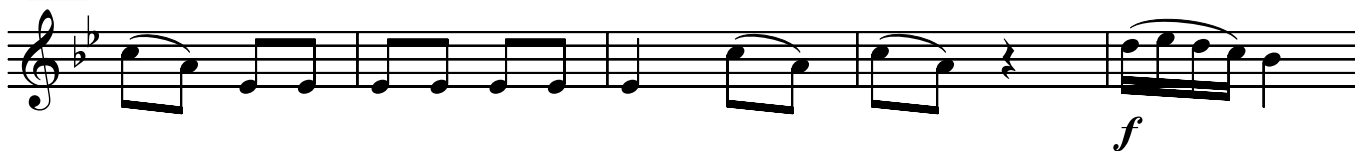
61



67



72



77



82



87



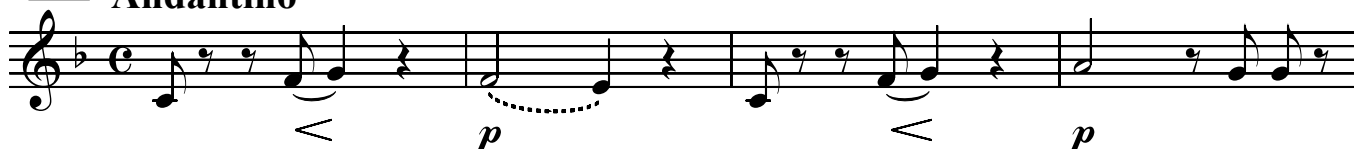
92



Fim



**98 Verso**  
**Andantino**



**102**



**105**



**108**



**111**



**114**

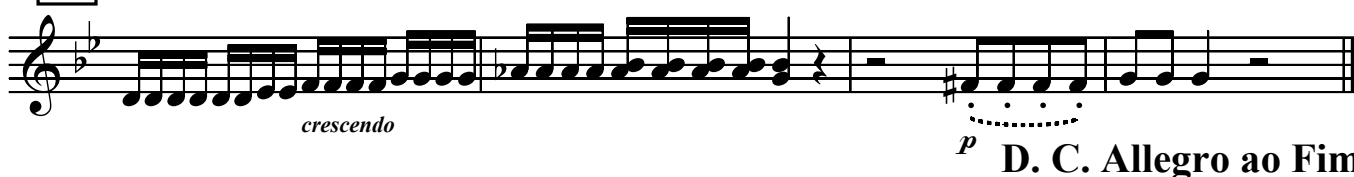


**D. C. Allegro, depois Gloria Patri**

**116 Largo**



**119**

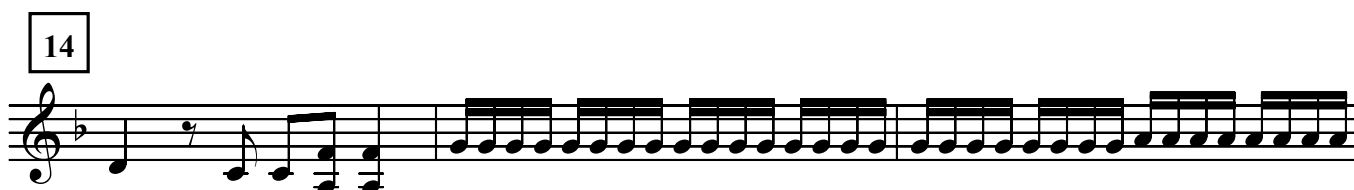
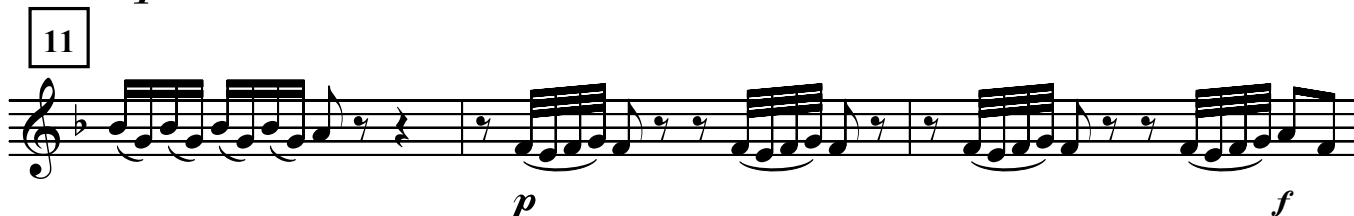
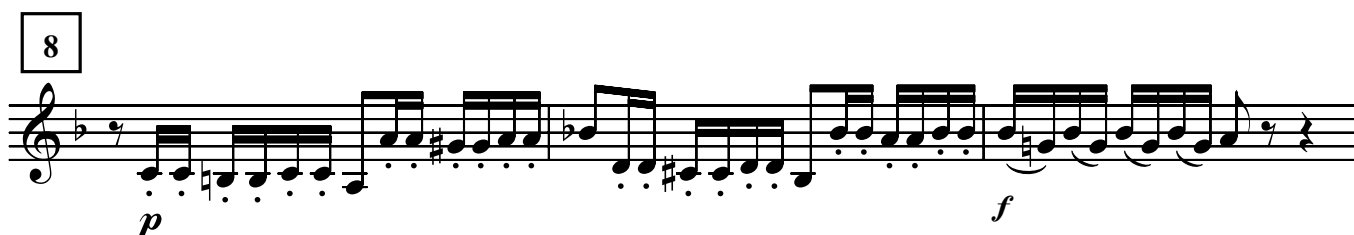


**D. C. Allegro ao Fim**

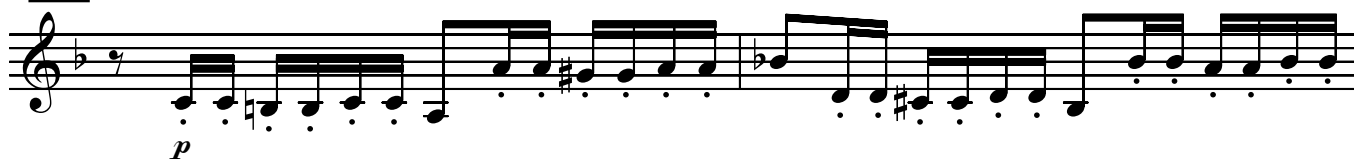
## Violino II

## Responsório VII

Andante moderato



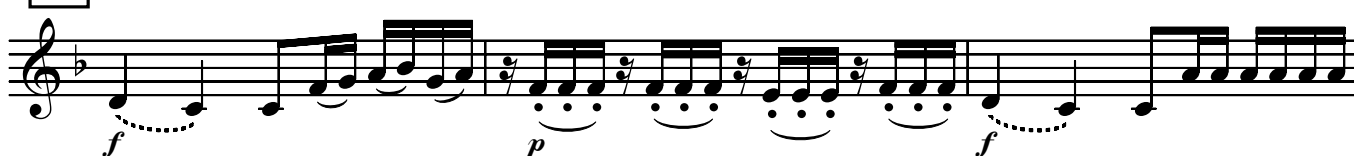
20



22



25

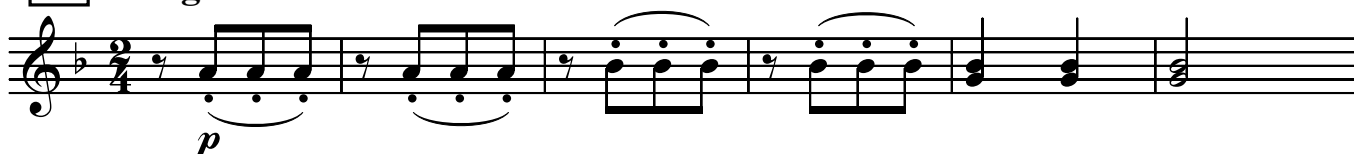


28

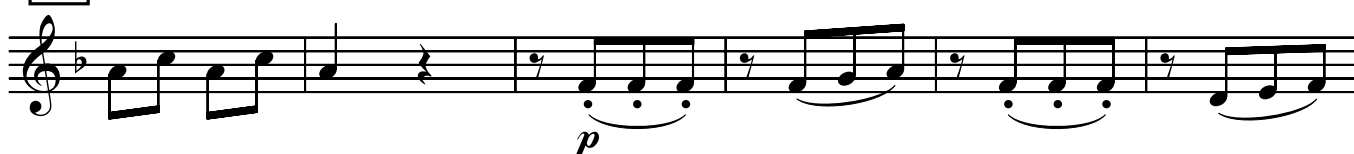


31

**Allegro**



37



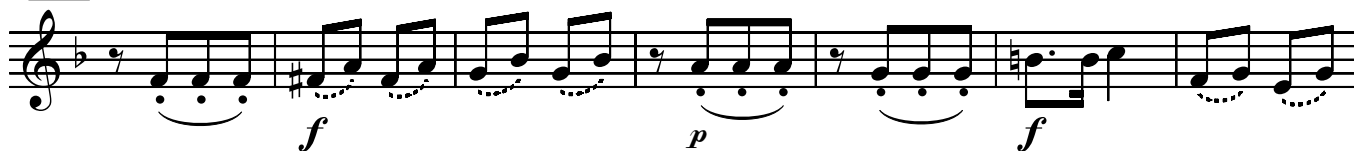
43



49



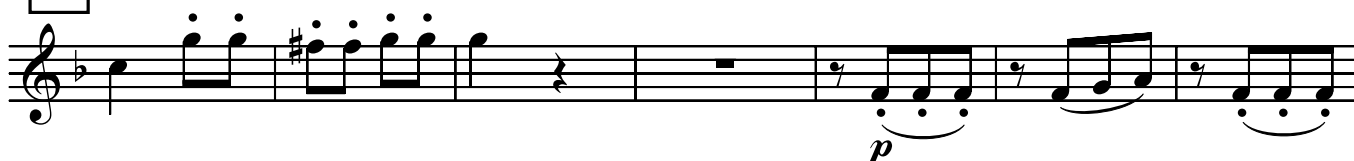
55



62



68



75



81



87



93



99



Fim

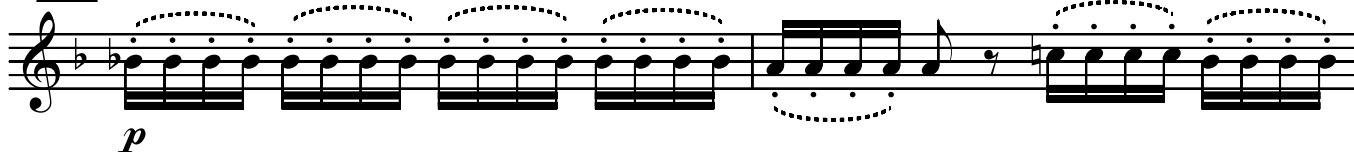
**106** Verso  
Andante moderato



**109**



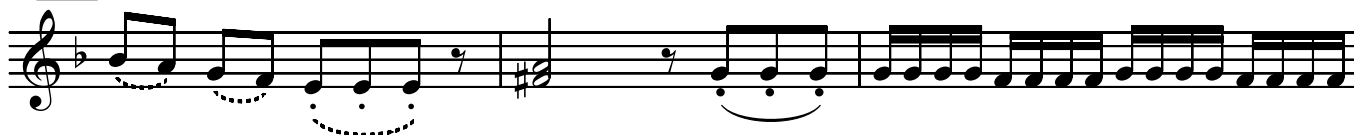
**112**



**114**



**117**



**120**



**123**



**D. C. Allegro ao Fim**

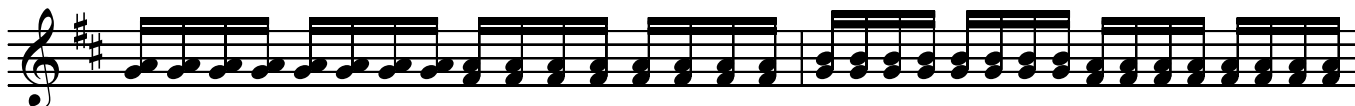
## Violino II

## Responsório VIII

Andante



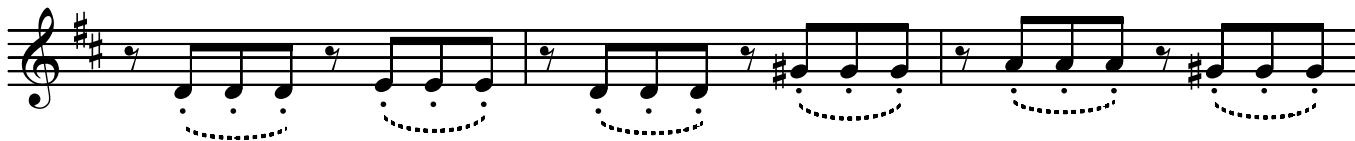
3



5



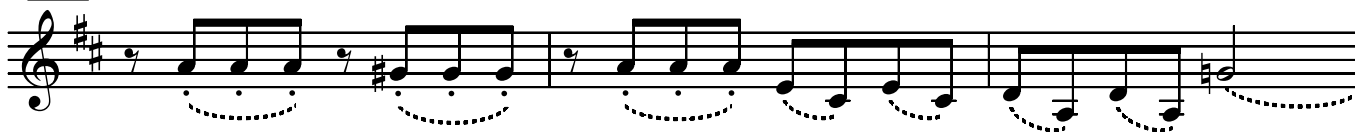
8



11



14



17



20



23

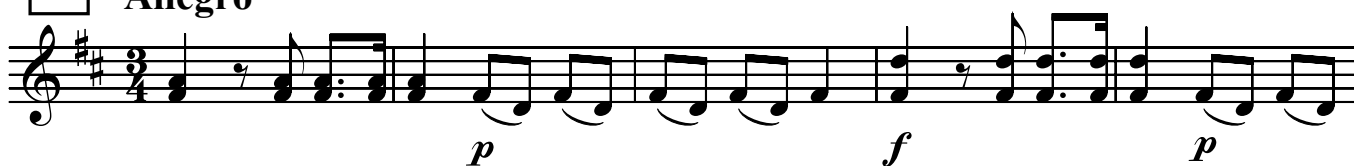


26

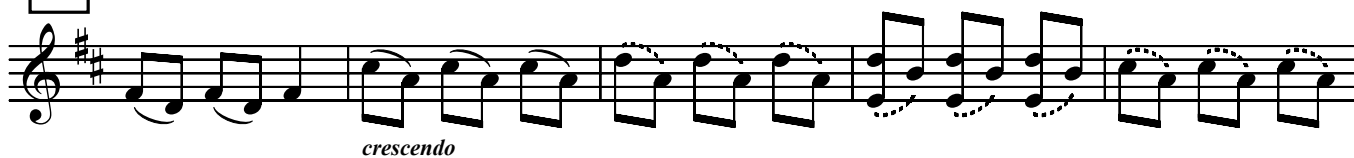


29

**Allegro**



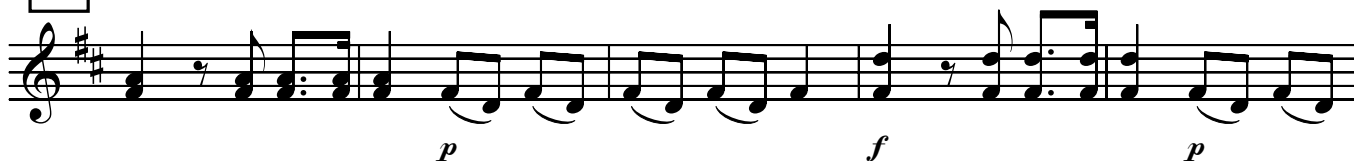
34



39



44



49



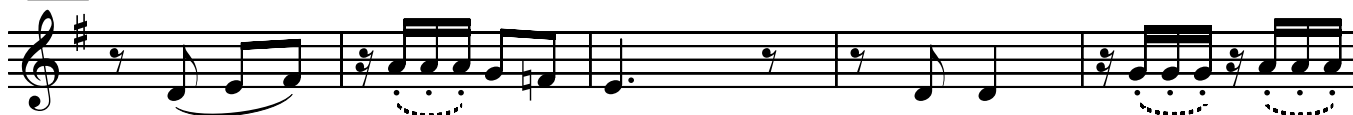
54







99



104



109



114



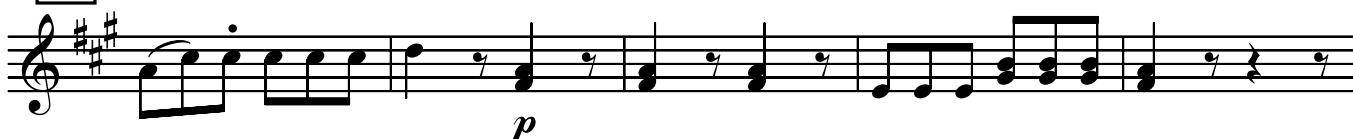
D. C. Allegro, depois Gloria Patri

118

Afetuoso



122



127



131



D. C. Allegro ao Fim