

PAMM 11

Baixo **Vide Domine, quoniam tribulor**

Antífona para o Setenário das Dores

Edição: Paulo Castagna
Fonte: CCSL

Jerônimo de Sousa
(fl.1721-1826)

Moderato

4

7

p cresc. f

10

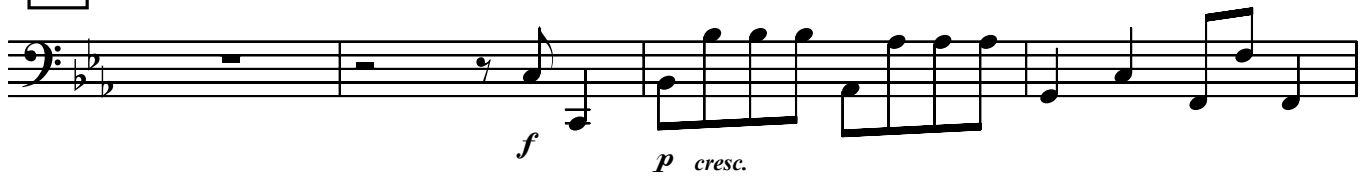
13

[illegible]

16

Musical notation for the bass line of 'The Rose Tree'. The key signature is one flat (B-flat). The melody starts with a half note G2, followed by a quarter note F2, a quarter note E2, and a quarter note D2. This is followed by a half note C2, a quarter note B1, a quarter note A1, and a quarter note G1. The melody then continues with a half note F1, a quarter note E1, a quarter note D1, and a quarter note C1. The melody ends with a half note B1, a quarter note A1, a quarter note G1, and a quarter note F1. The dynamics are marked *p* and *cresc.* (crescendo).

19



23



26



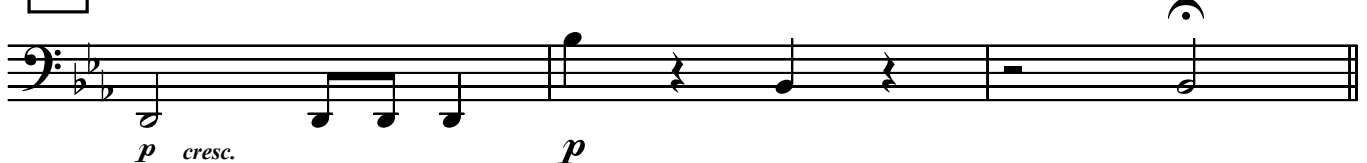
29



32



35



38

