

**PAMM 06**

# **Motetos e Miserere**

## **Baixo para a Procissão dos Passos**

Edição: Chiquinho de Assis e Paulo Castagna  
Fonte: AEAD

José Joaquim Emerico Lobo de Mesquita?  
(1746?-1805)

### **1 - Domine Jesu**

**Largo**



6



11



17



23



28



## 2 - Pater mi



11



16

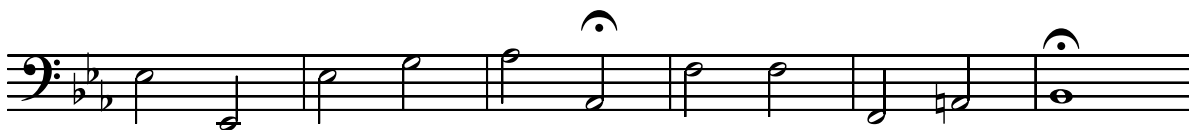


21



26



**3 - Jesus clamans I**

7



12



17



21



27



33



## 4 - O vos omnes



### 5 - Popule meus



4



8



### 6 - Jesus clamans II



5



## 7 - Miserere

A musical staff in bass clef with a key signature of one sharp (F#). The melody consists of the following notes: G2 (half note), A2 (half note), B2 (half note), C3 (half note), D3 (half note), and E3 (half note).

6

12

[illegible]

18

First staff of music: Bass clef, key signature of two sharps (F# and C#), 4/4 time signature. The melody consists of eighth and quarter notes.

23

The bass line of 'The Rose Tree' is written in G major (one sharp) and 2/4 time. It consists of 12 measures. The notes are: G2 (half), A2 (quarter), B2 (quarter), A2 (quarter), G2 (half), F#2 (quarter), E2 (quarter), D2 (half), C2 (half), B1 (quarter), A1 (quarter), G1 (half). The piece ends with a double bar line.

28

33

39



43



47

